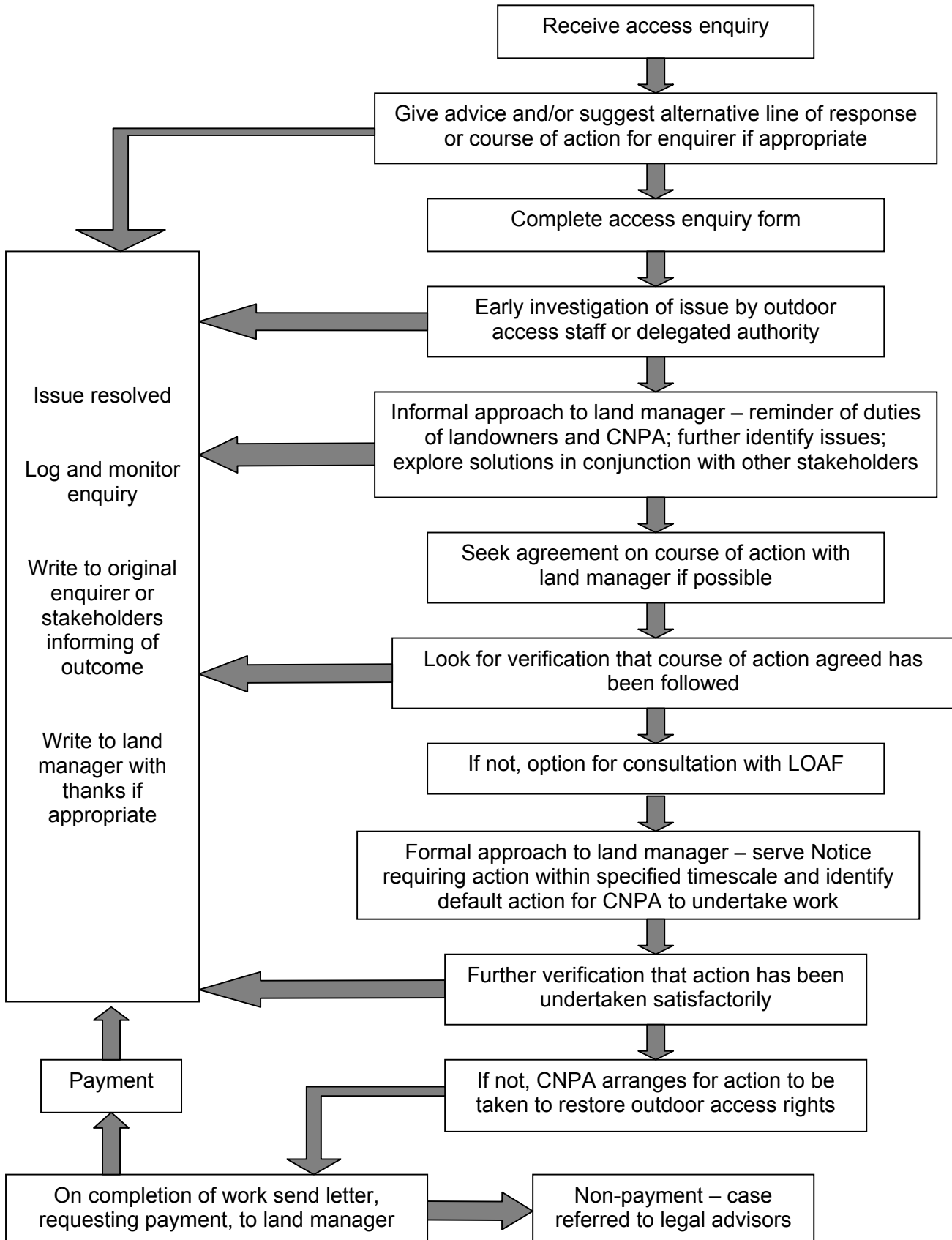


ANNEX 1 - SECTIONS 14 AND 15: UPHOLDING OUTDOOR ACCESS RIGHTS

Sections 14 and 15 give specific powers to the Park Authority to take action against land managers who utilise prohibition signs, obstructions and dangerous impediments, etc for the main purpose of deterring or preventing the exercise of access rights.



ANNEX 2 - SECTION 23: REINSTATEMENT OF PATH SURFACE

Land managers have a duty to restore within 14 days, the path surface of any core path or right of way that they disturb through ploughing or other husbandry.

